

DIAGNOSTIC CONFIDENCE: IT'S IN THE DNA

Enhance your clinical decision making with the SPECTRALIS® imaging platform for retina and glaucoma. The true potential of multimodal diagnostic imaging awaits you.

No matter how you configure your SPECTRALIS, you can be sure it contains the core DNA for high contrast, high resolution images that cut through the noise and give you the confidence to pinpoint pathology, identify real change and make more informed clinical decisions.

The SPECTRALIS is an upgradeable multimodal platform, with a number of features to increase diagnostic confidence: confocal fundus images, TruTrack Active Eye Tracking, retinal recognition, noise reduction and 10 layer visualization. As new technology emerges, it is simple to add imaging modalities to the SPECTRALIS that provide additional information to enhance clinical decision making, whilst preserving patient data for follow-up to within 1 micron.

SPECTRALIS modular options include:

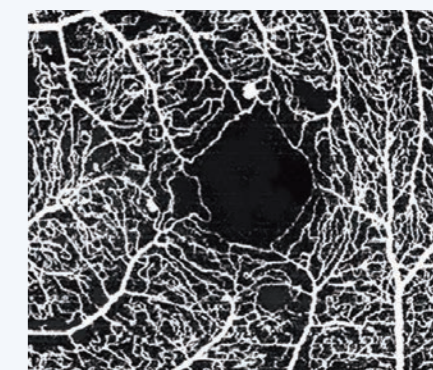
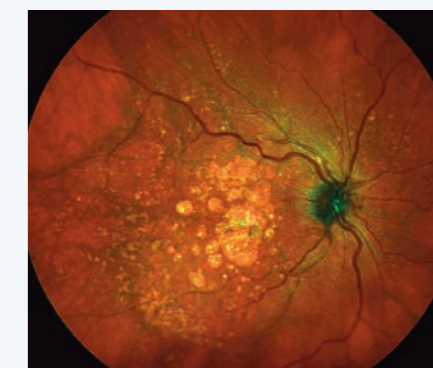
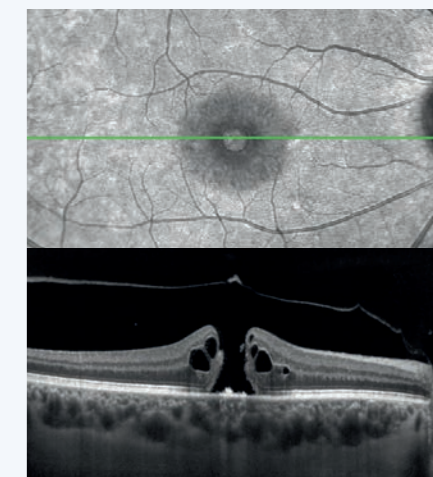
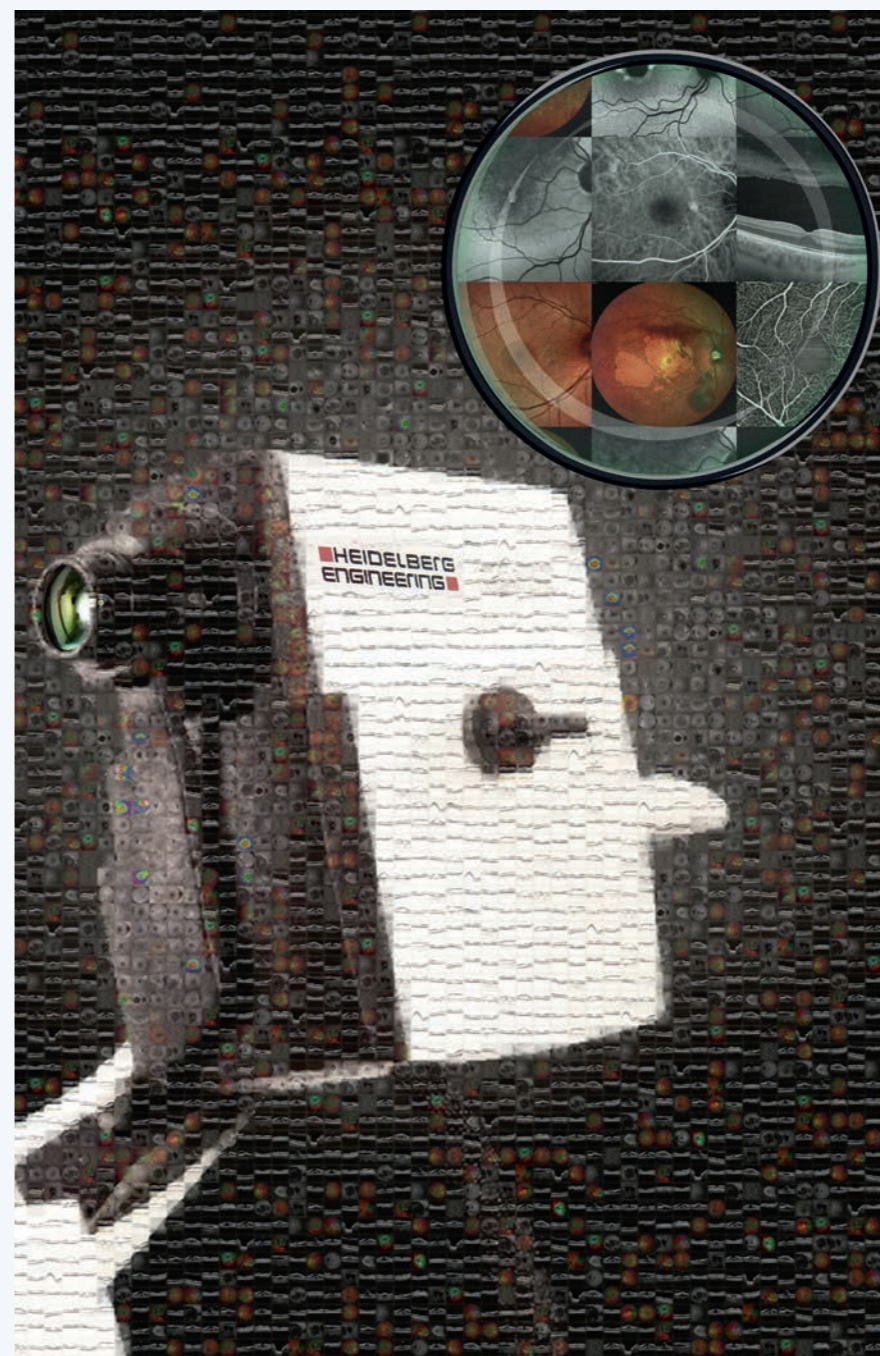
- Glaucoma Module Premium Edition
- MultiColor Module
- BluePeak Module
- Anterior Segment Module
- OCT2 Module
- OCT Angiography Module
- Scanning Laser Angiography
- Widefield Imaging Module
- Ultra-Widefield Imaging Module
- Flex Module

Confocal scanning laser ophthalmoscopy (cSLO) provides high contrast, high quality images, even in challenging patients with media opacities. Live fundus assessment with simultaneously-captured OCT enables you to capture pathology in real time, providing complementary diagnostic information. The SPECTRALIS averages up to 100 B-scans live in front of your eyes, even in a volume scan, and provides high resolution OCT images for visualization of 10 retinal layers, to help you identify and describe pathology.

TruTrack Active Eye Tracking is patented technology that uses a second laser beam to actively track the eye during OCT scanning to avoid motion artifacts. It "freezes" the retina, allowing you to capture the precise OCT image you want, even if the patient blinks or moves. The retinal recognition technology automatically repositions the OCT scan in the same anatomic location at follow-up for incredible accuracy. SPECTRALIS will never let you follow-up on the wrong patient – or the wrong eye.

For more information please visit: www.spectralis-oct.com

**HEIDELBERG
ENGINEERING**



Some of the SPECTRALIS multimodal imaging options (top to bottom): Infrared, OCT, MultiColor widefield, OCT angiography.

www.spectralis-oct.com