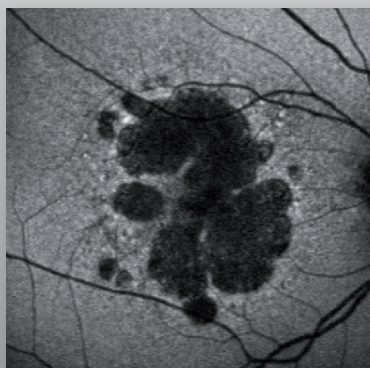




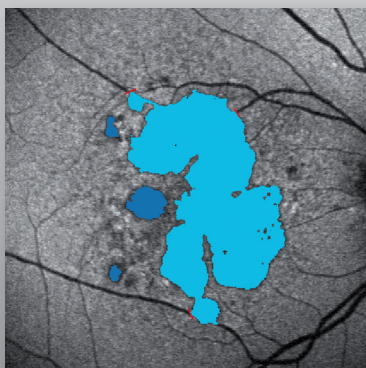
The RegionFinder™ software allows for accurate quantification of atrophic areas in BluePeak™ – blue laser autofluorescence images, the new standard for a non-invasive RPE health check. The unique TruTrack™ image alignment technology enables precise follow-up measurements including change and trend analysis for reliable disease monitoring.

The RegionFinder has been validated in ongoing studies of emerging therapies for dry AMD. Exclusive analytic capabilities make the RegionFinder an integral part of all SPECTRALIS BluePeak models designed to provide individualized patient care.

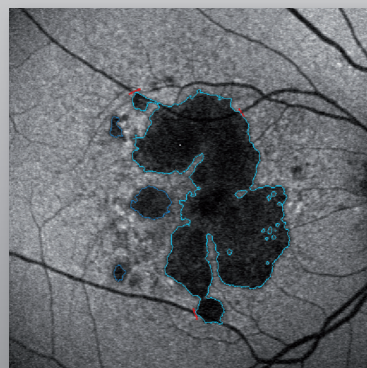
Easy Quantification of Atrophic Areas



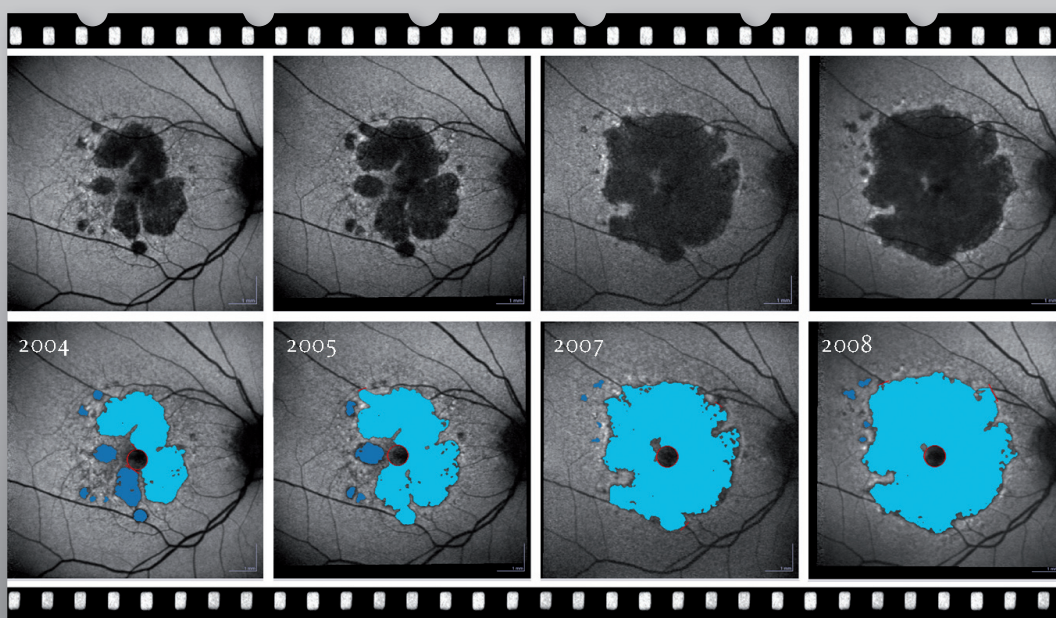
BluePeak



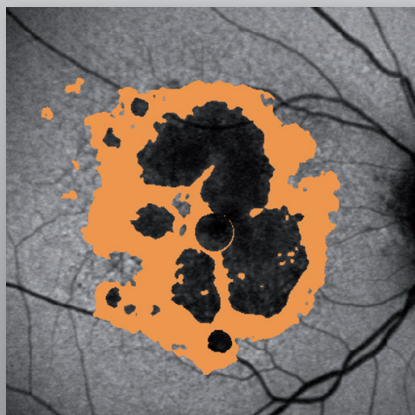
BluePeak with RegionFinder



Reliable Monitoring of Change Over Time



Powerful Analytical Tools

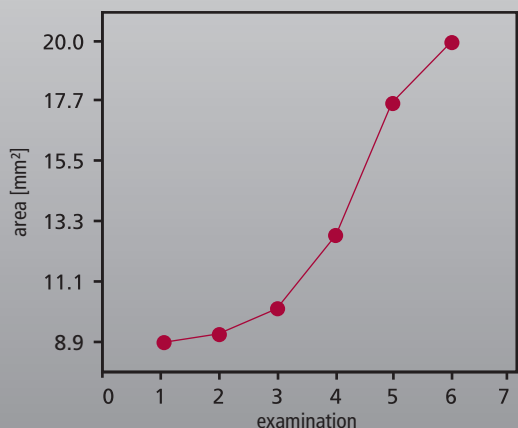


Difference Map

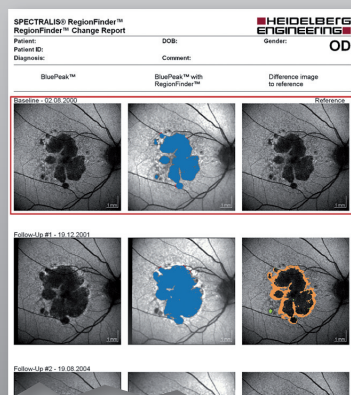
Clear Documentation in Practice and Clinic



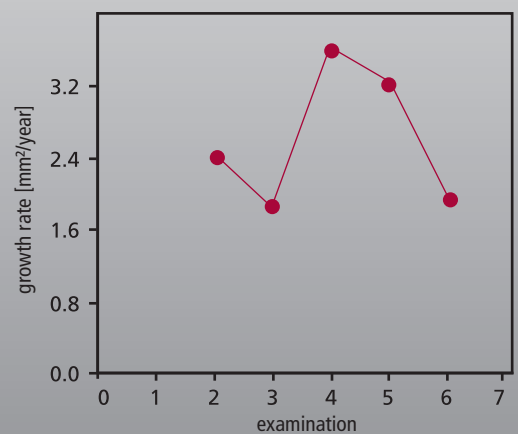
Single Exam Report



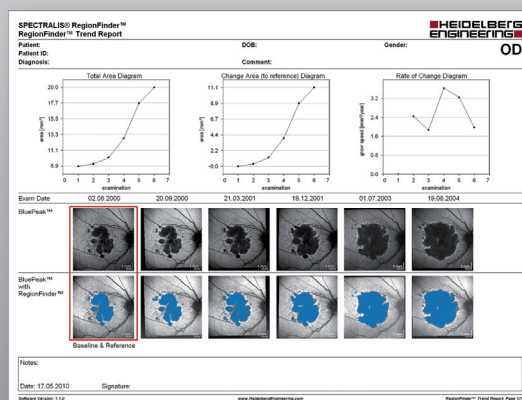
Change Analysis



Change Report



Trend Analysis



Trend Report