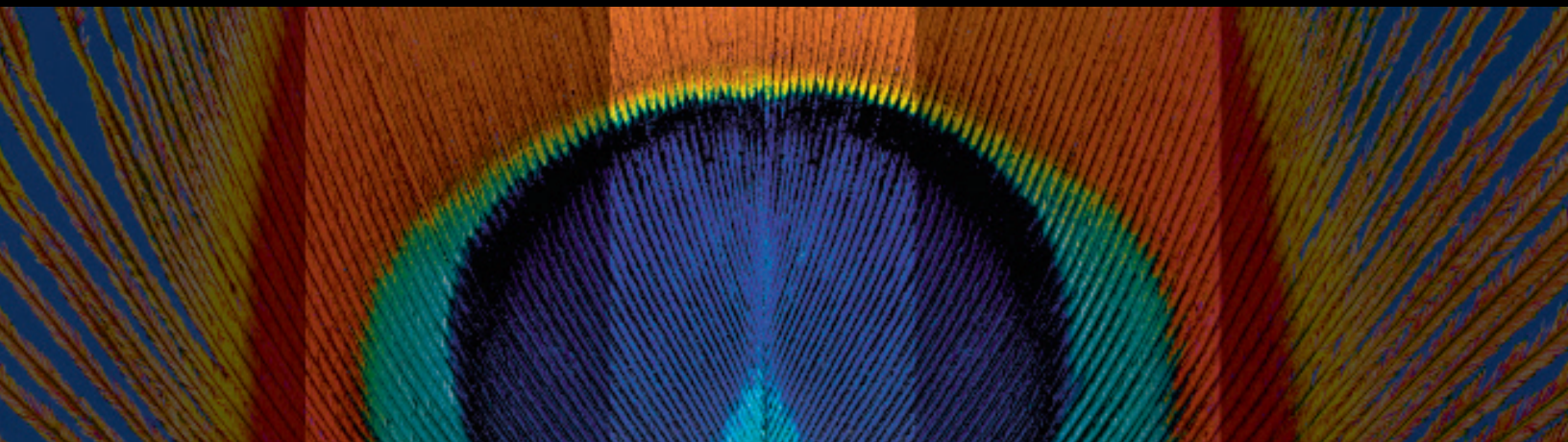


**Retina and Glaucoma
Imaging Platform**



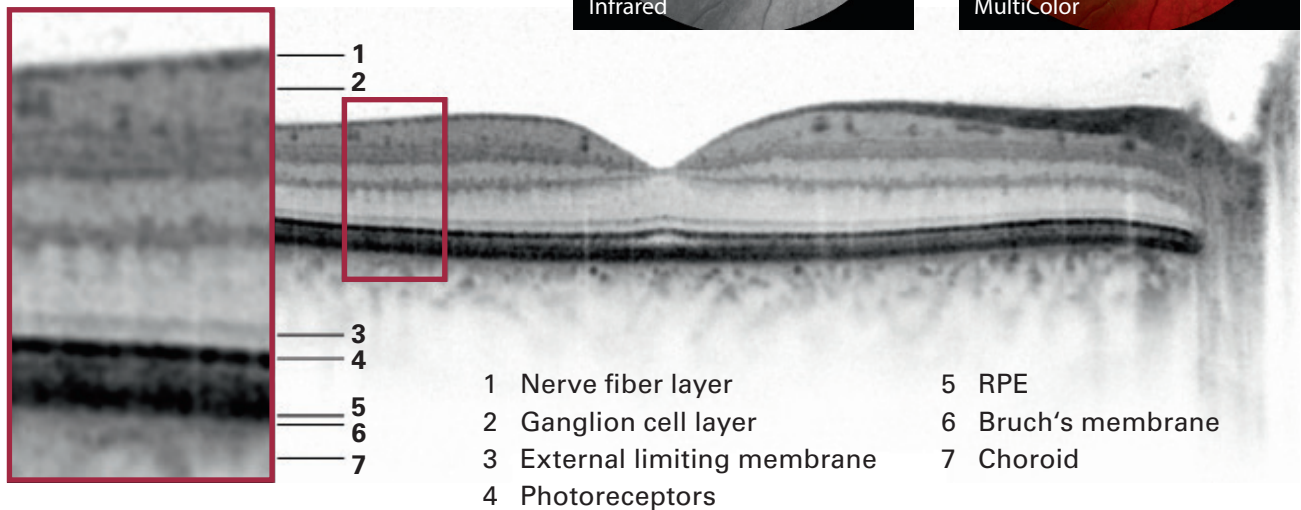
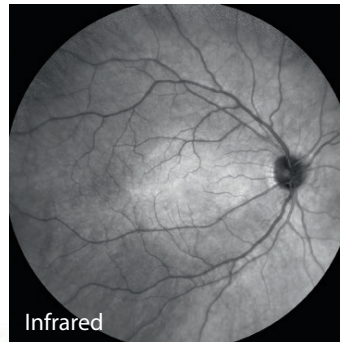
SPECTRALIS®

**HEIDELBERG
ENGINEERING**

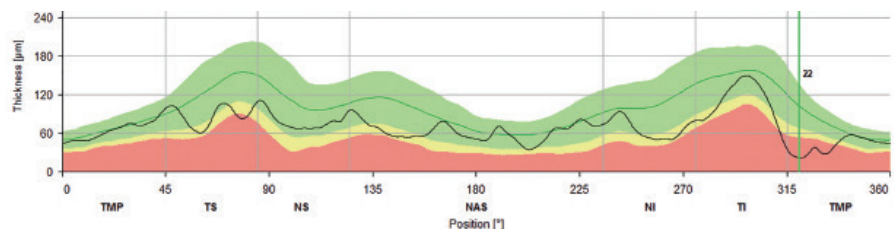
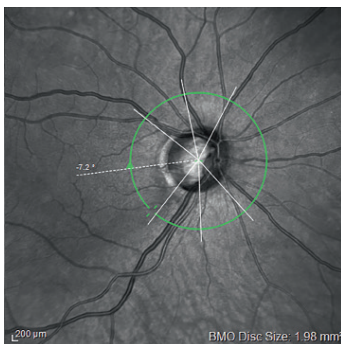
Retina and Glaucoma Imaging Platform

Experience the SPECTRALIS, an expandable, multimodal diagnostic imaging platform that combines scanning laser fundus imaging and high-resolution OCT. The SPECTRALIS is the only imaging solution with patented TruTrack Active Eye Tracking technology.

Retina



Glaucoma



Within normal limits
(> 5%)

Borderline
(< 5%)

Outside normal limits
(< 1%)

Upgradable, modular design

The SPECTRALIS is an ophthalmic imaging platform with an upgradable, modular design. This platform allows clinicians to configure each SPECTRALIS to the specific diagnostic workflow in the practice or clinic. Options include: OCT, multiple laser fundus imaging modalities, widefield and ultra-widefield modules, and scanning laser angiography.

		OCT SPECTRALIS	HFA+OCT SPECTRALIS	HFA SPECTRALIS
OCT	Retina	■	■	
	Glaucoma	■	■	
	Anterior Segment	option	option	
	Glaucoma Module Premium Edition	option	option	
	OCT2 Module (85,000 Hz)	option	option	
Fundus	Infrared Reflectance	■	■	■
	BluePeak	option	■	■
	MultiColor	option	option	option
Widefield	Panning Camera	option	■	■
	Widefield Imaging (Fundus & OCT)	option	option	option
Angiography	Fluorescein Angiography		■	■
	ICG Angiography		option	option
	Ultra-Widefield Angiography		option	option
	OCT Angiography	option	option	

Some options can be added anytime; some are only available at initial equipment purchase.

Based on exclusive core technologies

- TruTrack Active Eye Tracking
- Heidelberg Noise Reduction
- AutoRescan
- Simultaneous fundus and OCT imaging
- Anatomic Positioning System
- Confocal Scanning Laser Ophthalmoscopy

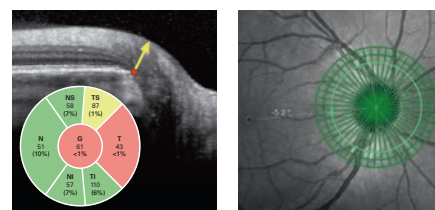


The Anterior Segment Module enables high-resolution OCT imaging of cornea, sclera, and anterior chamber angles.

Glaucoma Module Premium Edition



The Glaucoma Module Premium Edition provides a comprehensive analysis of the optic nerve head, retinal nerve fiber layer, and ganglion cell layer by precisely matching unique scan patterns to the fine anatomic structures relevant in glaucoma diagnostics.

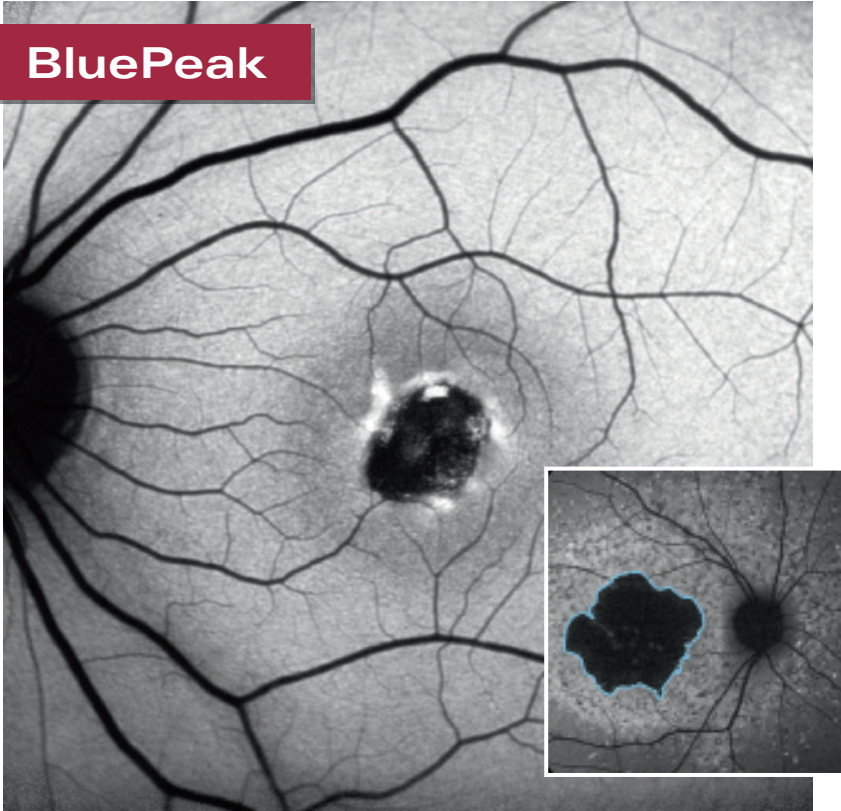


OCT2 Module



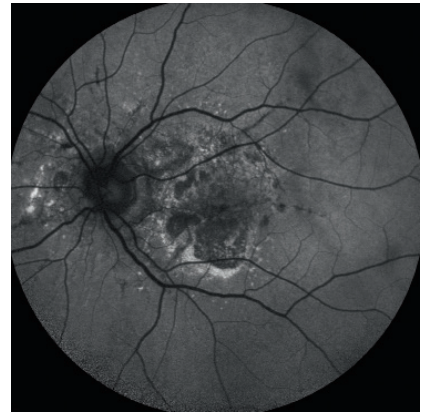
OCT2 offers the faster scan speed needed for advanced imaging technologies such as OCTA angiography, with enhanced image quality from the vitreous through the choroid.

BluePeak



Blue laser autofluorescence

BluePeak scanning laser fundus imaging provides a map of the retina which can reveal metabolic malfunction of diagnostic significance in many conditions such as AMD.



MultiColor

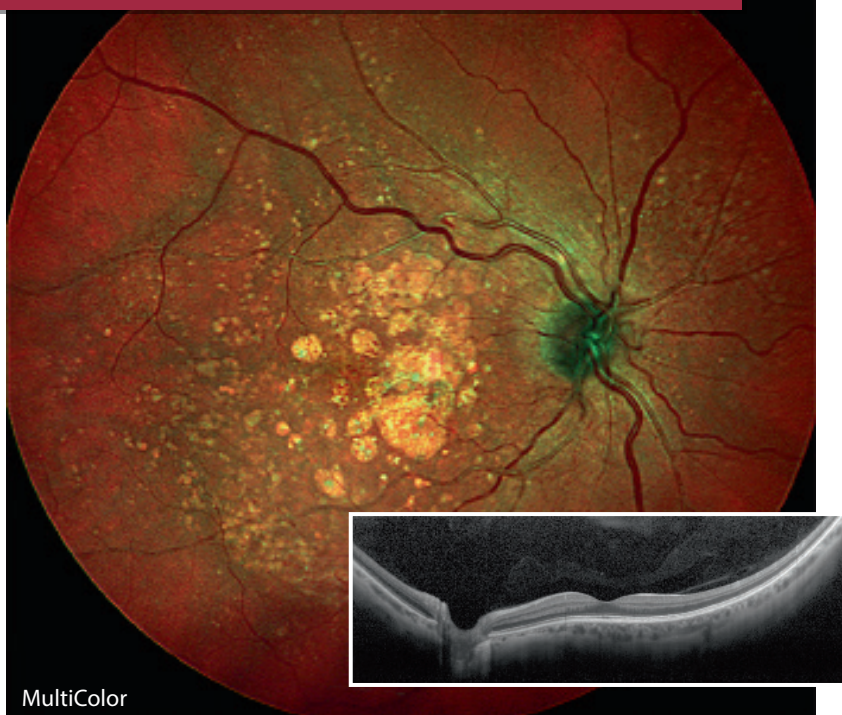


Structural detail in color

MultiColor scanning laser fundus imaging delivers structural information and clarity not available from traditional fundus photography.

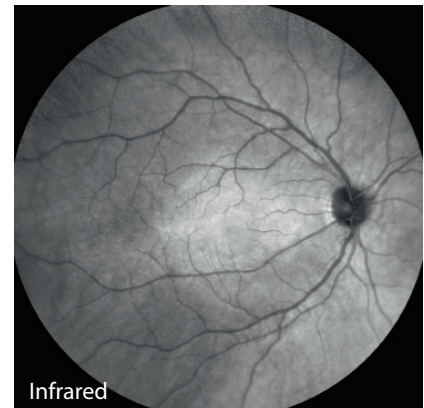


Widefield Imaging Module

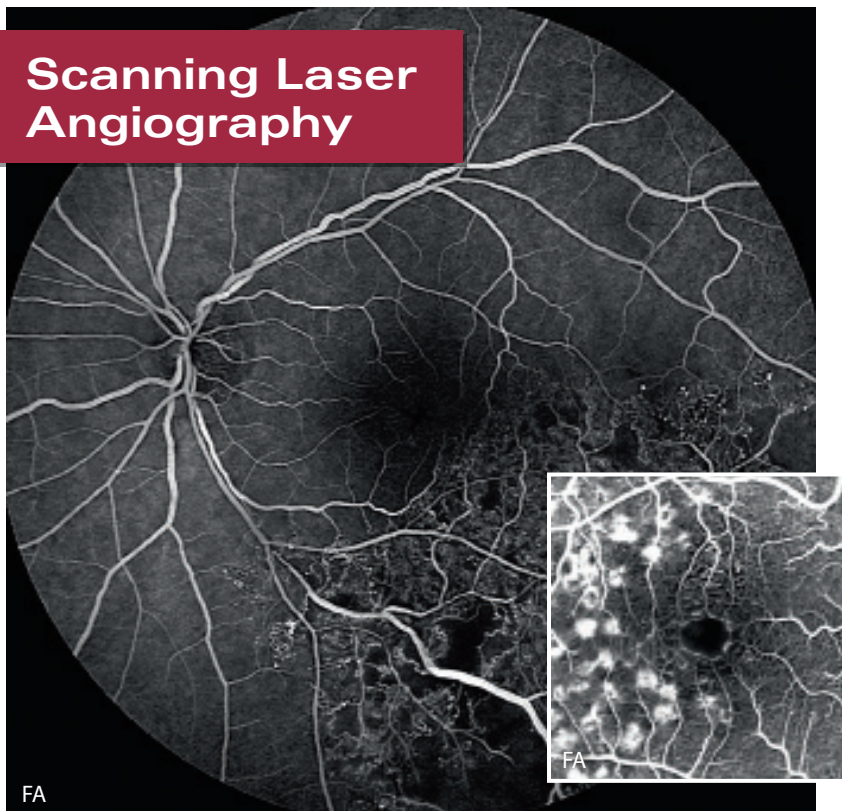


Widefield fundus and OCT

The Widefield Imaging Module provides the standard field of view of a mydriatic fundus camera for all SPECTRALIS fundus and OCT imaging modalities, simplifying diagnostic protocols and facilitating detection of peripheral pathology.

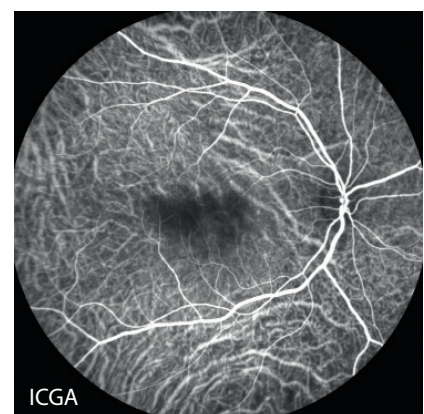


Scanning Laser Angiography

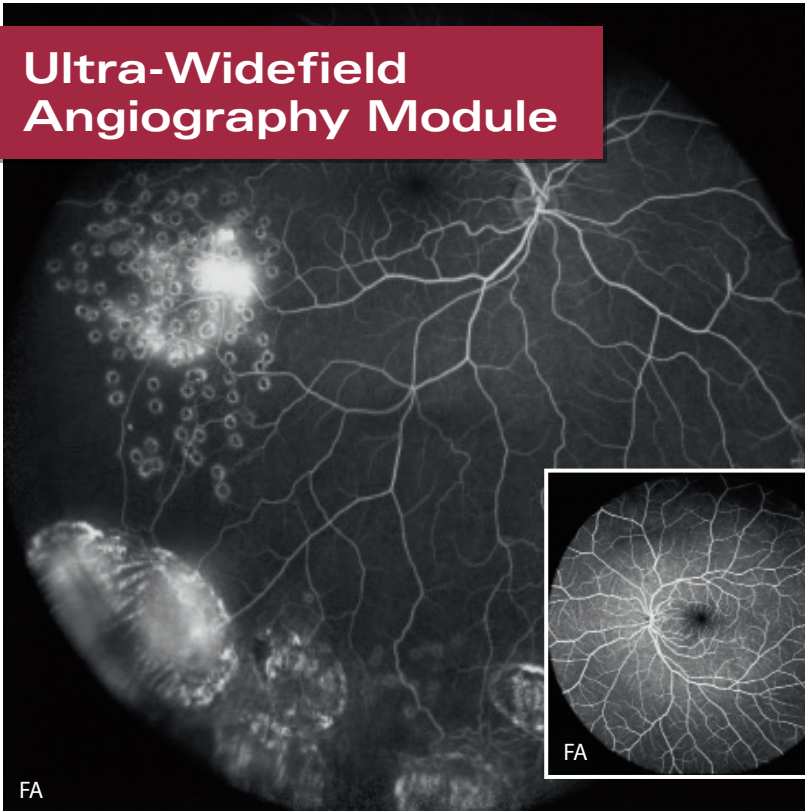


High-resolution images and videos

The SPECTRALIS scanning laser angiography provides high-resolution images and video sequences showing the dynamic movement of dye through the vessels and minute details of the parafoveal capillary network.

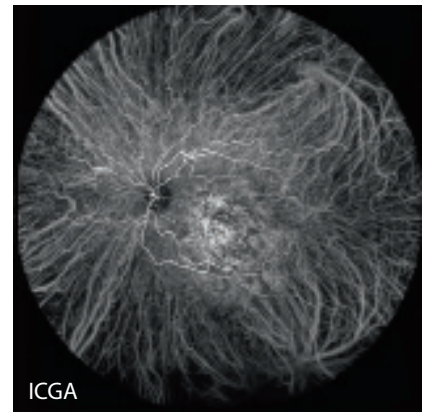


Ultra-Widefield Angiography Module

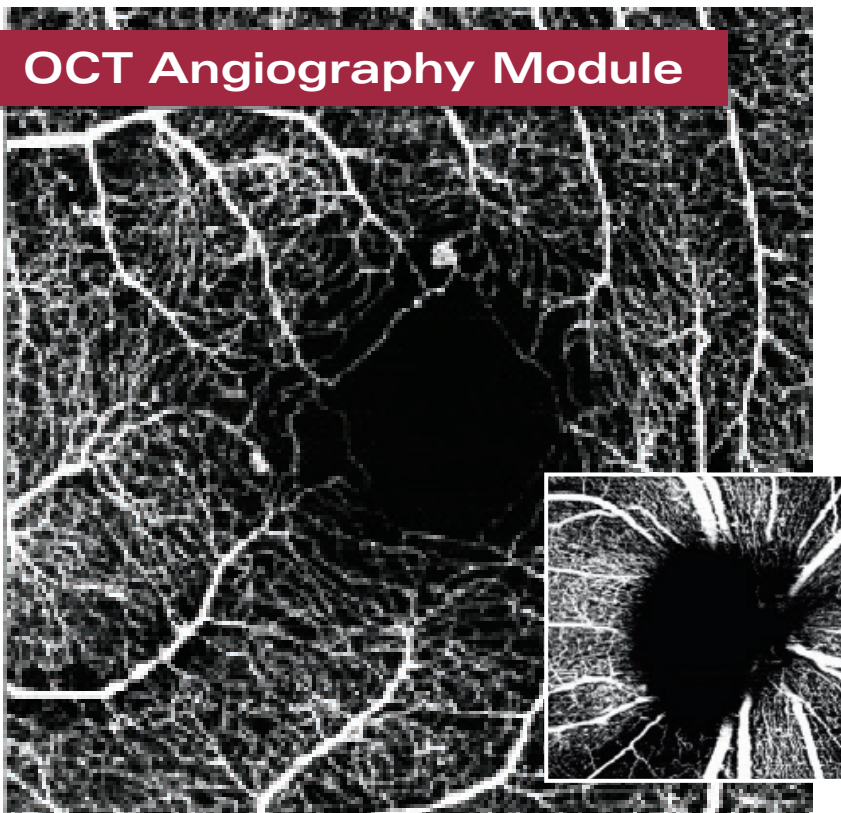


Angiography from the macula through the periphery

The Ultra-Widefield Angiography Module delivers evenly illuminated and undistorted, high-contrast scanning laser images from the macula through the periphery.

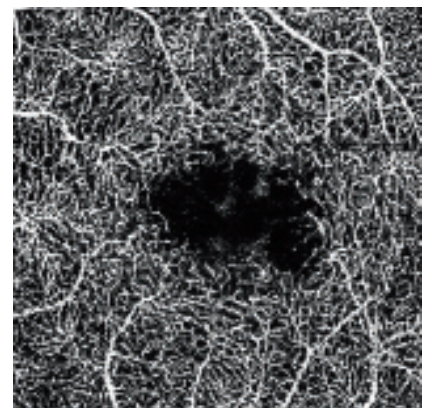


OCT Angiography Module



Non-invasive vascular imaging

The OCT Angiography Module non-invasively produces high-resolution, three-dimensional illustrations of the retinal and choroidal microvasculature.





Headquarters

Heidelberg Engineering GmbH · Max-Jarecki-Str. 8 · 69115 Heidelberg · Germany
Tel. +49 6221 64630 · Fax +49 6221 646362

USA

Heidelberg Engineering Inc. · 10 Forge Parkway · Franklin, MA · 02038
Tel. +1 508-530-7900 · Fax +1 508-530-7901

www.HeidelbergEngineering.com