

Non-Contact Ultra-Widefield Angiography

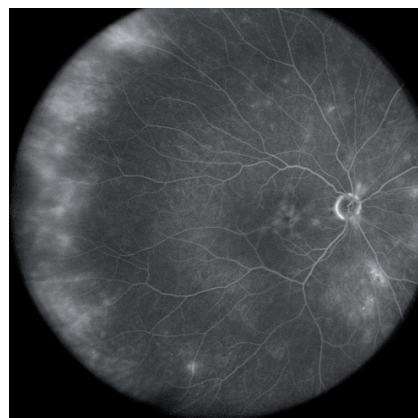
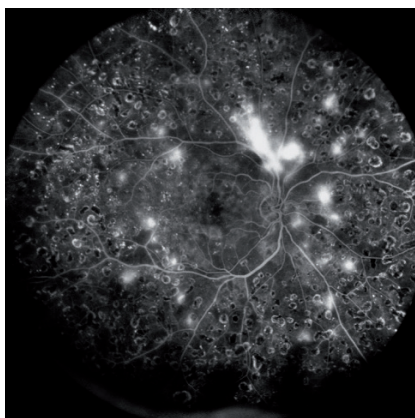
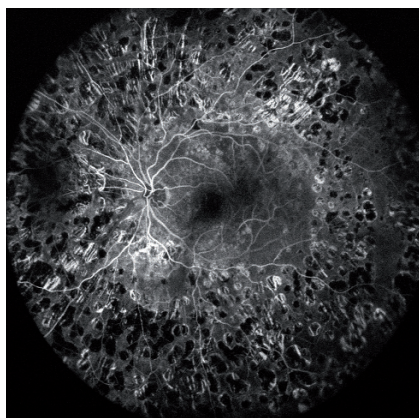
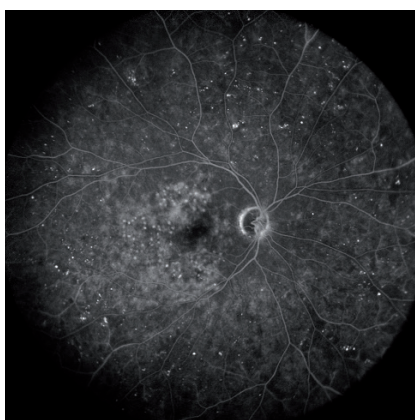
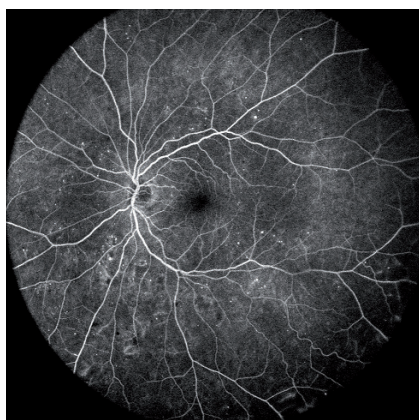
"Many common diseases are underestimated from lack of peripheral angiography. The SPECTRALIS non-contact, ultra-widefield lens will become a crucial tool for retina specialists."

Giovanni Staurenghi, MD

The Non-Contact Ultra-Widefield Angiography Module delivers evenly illuminated and undistorted, high contrast images even in the far periphery. The lens attaches easily to any SPECTRALIS or HRA2 camera head and is interchangeable with the existing lenses. The non-contact module makes ultra-widefield imaging convenient for both patient and operator.

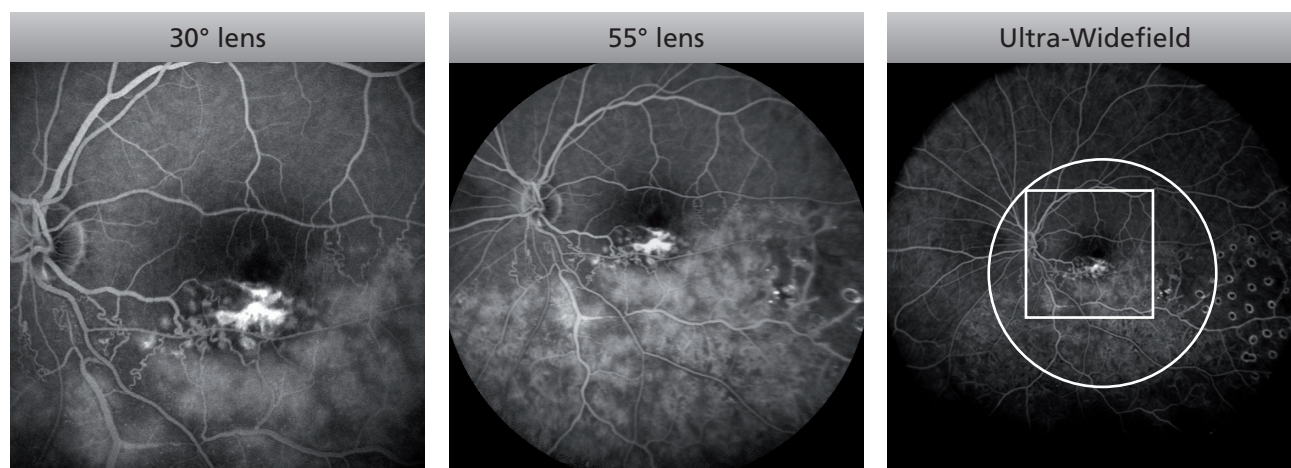
This easy-to-use module further extends the multi-modality capability of the SPECTRALIS platform, provides detailed images of the periphery, and offers a cost-effective alternative to stand-alone wide-field imaging devices.

Non-Contact Peripheral Angiography in Diabetes



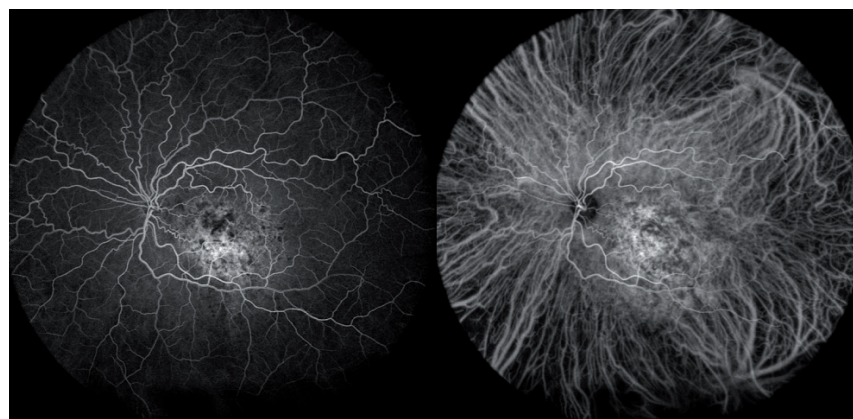
Non-contact ultra-widefield fluorescein angiography of patients with diabetic retinopathy shows the topographic extent of changes such as microaneurysms, neovascularizations, perivascular leakage and areas of peripheral non-perfusion.

See the Broader Picture



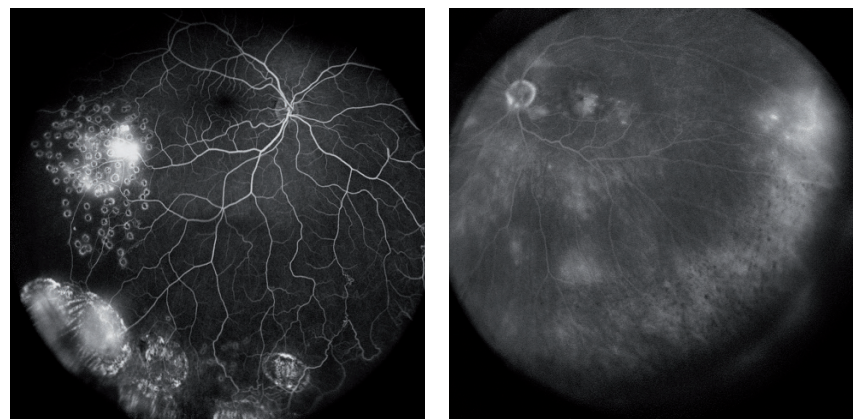
Series of FA images of a patient with retinal vein occlusion.

Simultaneous Video Angiography



Simultaneous high-speed video FA and ICGA in a patient with a choroidal hemangioma.

Diagnostic Imaging in the Far Periphery



The SPECTRALIS panning camera head extends the field of view to the far periphery as seen in these FA images of vasculitis (left) and diabetic retinopathy (right).

Images in this document are courtesy of: Antonia Jousen, MD, Berlin, Germany, Frank G. Holz, MD, Bonn, Germany, Sebastian Wolf, MD, Bern, Switzerland



Corporate Headquarters

Heidelberg Engineering GmbH
Tiergartenstr. 15 • 69121 Heidelberg • Germany
Tel. +49 6221 6463-0 • Fax +49 6221 646362

UK Office

Heidelberg Engineering Ltd. • Breakspear Park, Suite F
Breakspear Way • Hemel Hempstead • Hertfordshire HP2 4TZ
Tel. +44 1442 345 370 • Fax +44 1442 345 001

US Office

Heidelberg Engineering, Inc.
1808 Aston Avenue, Suite 130 Carlsbad, CA 92008
Tel. +1 760-536-7000 • Fax +1 760-536-7100