

The OCT Angiography Module is a non-invasive imaging technology that provides a three-dimensional depiction of retinal vascular flow with versatility in field of view, scan speed, and image resolution.

The multimodal SPECTRALIS offers the ability to combine OCTA with structural OCT, confocal scanning laser imaging, and dye-based angiography in a single device to facilitate comprehensive clinical assessment and efficient patient care.

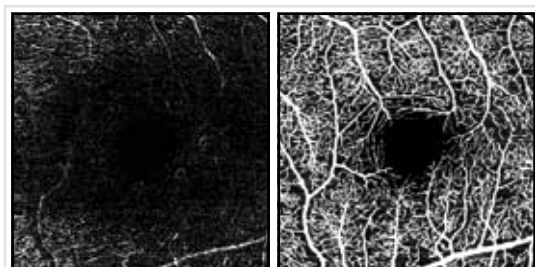
**See more detail within the individual vascular plexuses**

SPECTRALIS delivers high resolution OCTA images with a lateral resolution of 5.7  $\mu\text{m}/\text{pix}$ , depicting fine capillary networks in great detail.

The axial resolution of 3.9  $\mu\text{m}/\text{pix}$  allows for segmentation of all four histologically-validated retinal vascular plexuses. Presets for the nerve fiber layer as well as superficial, intermediate and deep capillary plexuses that constitute the superficial (SVC) and deep vascular complexes (DVC), offer a more comprehensive clinical evaluation.

Presets that delineate the avascular zone, chorio-capillaris and choroid support the visualization of CNV.

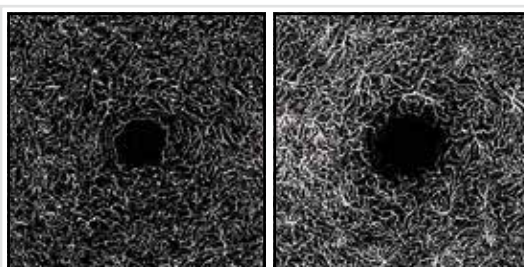
Default slabs	
	Vitreoretinal Interf.
Full	Ret
	SVC
	DVC
	Avascular Complex
	Choriocapillaris
	Choroid



Nerve Fiber Layer Vascular Plexus

Superficial Vascular Plexus

Superficial Vascular Complex



Intermediate Capillary Plexus

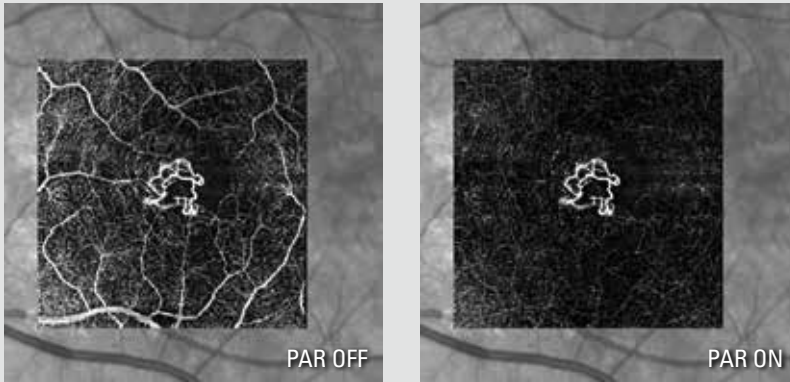
Deep Capillary Plexus

Deep Vascular Complex



Avascular Complex

## Clearly visualize pathology at all depths



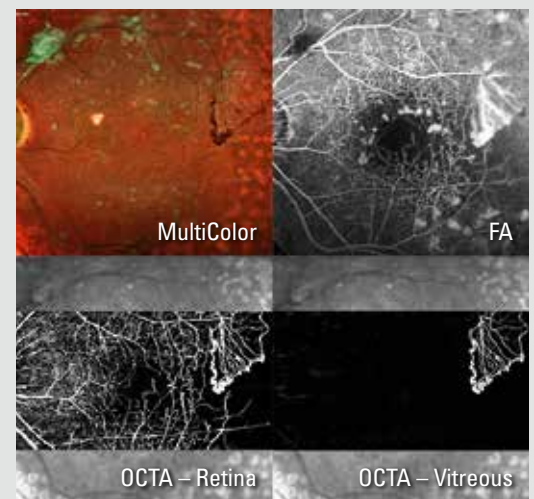
The projection artifact removal (PAR) tool utilizes information from the Superficial Vascular Plexus to remove artifacts from OCTA images of the outer retina.

By eliminating these artifacts, PAR enables precise visualization of vascular structures and pathology in the Deep Vascular Complex.

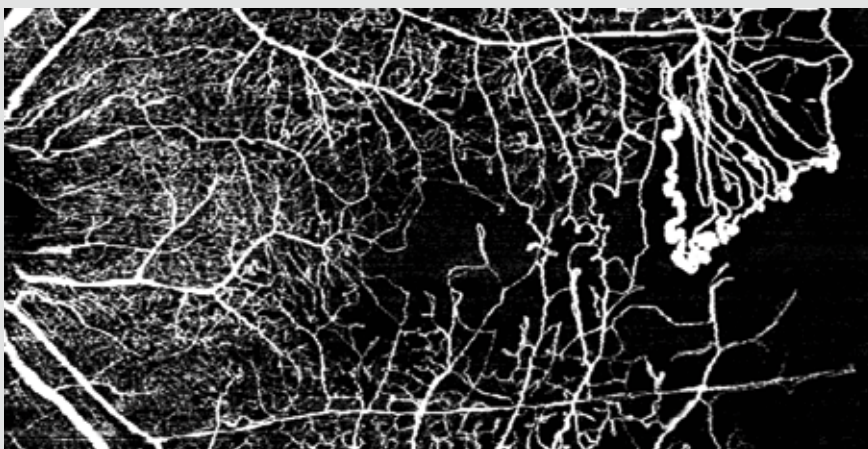
## Enhance clinical decisions with multimodal imaging

The SPECTRALIS OCT Angiography Module allows you to combine OCTA images with structural OCT and confocal laser scanning fundus imaging modalities in a convenient and seamless manner for a comprehensive clinical evaluation.

The SPECTRALIS multimodal imaging platform facilitates a unique hybrid approach to angiography. Powered by TruTrack Active Eye Tracking, the optional Scan Planning Tool enables precise, pixel-to-pixel correlation of OCTA follow-ups to existing fundus or angiography images. Validating clinical assessment through multiple imaging modalities offers the confidence needed to utilize OCT angiography to its fullest potential.



## Experience the flexibility of a wider field of view



The SPECTRALIS OCT Angiography Module allows you to focus on the information that is relevant for the assessment of each individual patient.

Explore vascular details in a high resolution  $10^\circ \times 10^\circ$  image or obtain a widefield overview by choosing a high speed scan with a horizontal field of view up to  $30^\circ$ .

With this flexible image resolution and field of view, the OCTA Module offers unique options for exploring pathologies.

**Headquarters**  
Heidelberg Engineering GmbH  
Max-Jarecki-Str. 8  
69115 Heidelberg · Germany  
Tel. +49 6221 64630

**AUS**  
Heidelberg Engineering Pty Ltd  
404 Albert St.  
East Melbourne 3002 · Victoria  
Tel. +61 396 392 125

**CH**  
Heidelberg Engineering GmbH  
Alte Winterthurerstrasse 88  
8309 Nürensdorf  
Tel.: +41 44 8887 020

**UK**  
Heidelberg Engineering Ltd.  
55 Marlowes · Hemel Hemstead  
Hertfordshire HP1 1LE  
Tel: +44 1442 502 330

**HEIDELBERG  
ENGINEERING**  
[www.HeidelbergEngineering.com](http://www.HeidelbergEngineering.com)