

The OCT2 Module is the next generation OCT technology for the SPECTRALIS® platform, offering enhanced image quality from vitreous to choroid. With a much faster scanning speed of 85,000 Hz, it improves clinical workflow and increases patient comfort by shortening examination times.

The OCT2 Module is ideal for advanced imaging modalities such as OCT angiography. Since it can be added to any existing upgradeable SPECTRALIS system, the OCT2 Module is a sound investment for the future.

Increased Scanning Speed

With a scan rate of 85,000 Hz, the OCT2 Module more than doubles the scan speed of the SPECTRALIS. The increased scanning speed supports efficient clinical workflows when performing comprehensive glaucoma evaluations with the Glaucoma Module Premium Edition or high resolution OCT angiography.

“I increasingly found that the process of obtaining OCT images caused patient flow to bottleneck at my practice. With the OCT2 Module for SPECTRALIS I could reduce the imaging time for patients by more than half.” David M. Brown, MD, Houston, Texas

Retina Management – Posterior Pole Scans

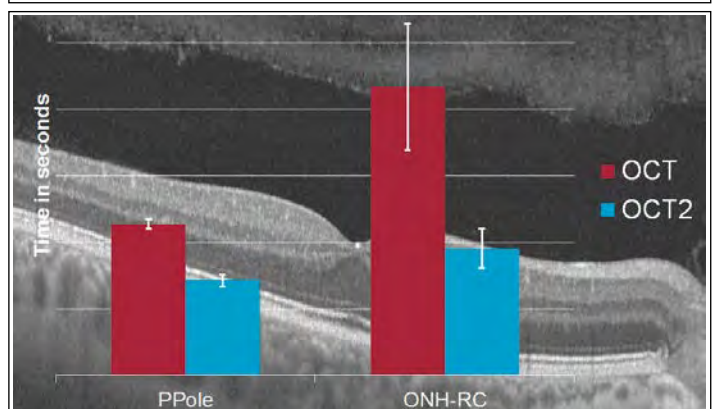
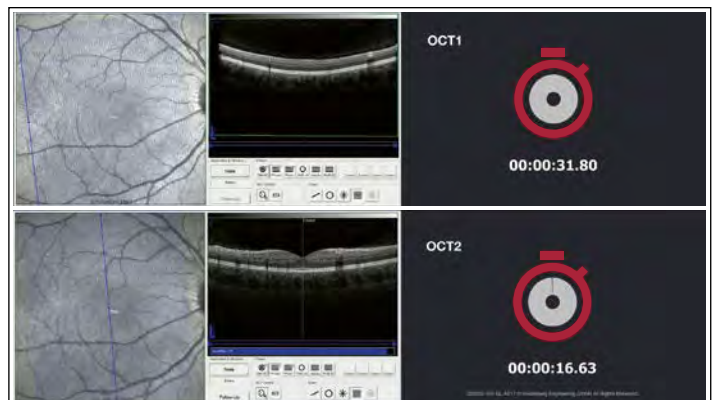
Dense, high speed OCT2 scans of the posterior pole (PPole) deliver high resolution images that support diagnostic decision making.

Glaucoma Management – ONH Circle Scans

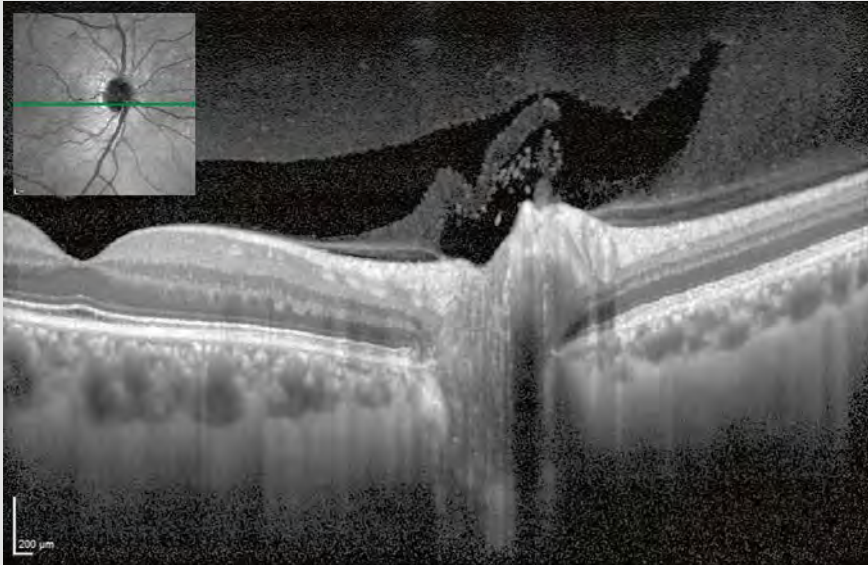
With the OCT2 Module, optic nerve head radial circle (ONH-RC) scans driven by the Glaucoma Module Premium Edition are more than 60% faster than before.

Improved Workflow Efficiency

Together with TruTrack Active Eye Tracking, the OCT2 Module reduces variability of examination time and results in a more efficient workflow.



High Image Quality from Vitreous to Choroid



The OCT2 Module provides enhanced visualization from vitreous to choroid in a single scan and delivers excellent choroidal penetration while preserving resolution in the inner retina.

En face OCT imaging with transverse sections of 6-micron lateral resolution enables the visualization of vascular structures, nerve fiber bundles, and the extent of retinal pathologies.

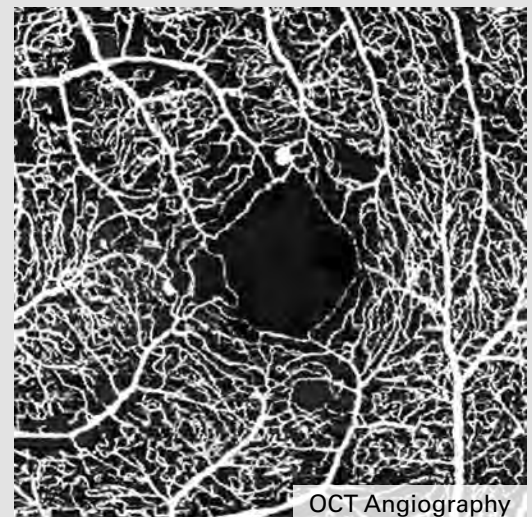
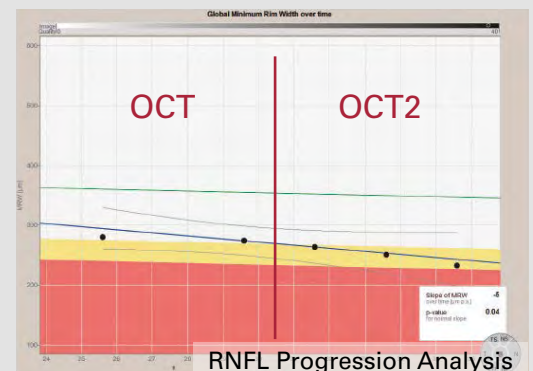
Advanced SD-OCT Technology

In the ongoing evolution of spectral domain OCT (SD-OCT) technology, the OCT2 Module offers a significant step forward in clinical performance. The continuity of the SD-OCT application across generations of the SPECTRALIS platform ensures compatibility of patient data for long-term follow-ups.

The OCT2 Module is ideal for faster glaucoma assessment with the Glaucoma Module Premium Edition and new advanced imaging modalities such as OCT angiography.

“We believe OCT angiography will be a significant tool used in future retinal exams; the ability to have that hardware in place for this technology is very advantageous.”

David M. Brown, MD, Houston, Texas



Headquarters
Heidelberg Engineering GmbH
Max-Jarecki-Str. 8
69115 Heidelberg · Germany
Tel. +49 6221 6463-0

AUS
Heidelberg Engineering Pty Ltd
404 Albert St.
East Melbourne 3002 · Victoria
Tel. +61 396 392 125

CH
Heidelberg Engineering GmbH
Schulstrasse 161
8105 Regensdorf
Tel.: +41 44 8887 020

UK
Heidelberg Engineering Ltd.
55 Marlowes
Hemel Hempstead
Hertfordshire HP1 1LE
Tel: +44 1442-502 330

**HEIDELBERG
ENGINEERING**
www.HeidelbergEngineering.com